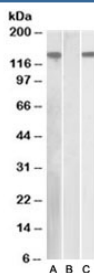


NALP2 Antibody [NLRP2] (R36158)

Catalog No.	Formulation	Size
R36158-100UG	0.5 mg/ml in 1X TBS, pH7.3, with 0.5% BSA (US sourced) and 0.02% sodium azide	100 ug

[Bulk quote request](#)

Availability	1-3 business days
Species Reactivity	Human
Format	Antigen affinity purified
Host	Goat
Clonality	Polyclonal (goat origin)
Isotype	Goat Ig
Purity	Antigen affinity
Gene ID	55655
Applications	Western Blot : 1-3ug/ml ELISA (peptide) LOD : 1:4000
Limitations	This NALP2 antibody is available for research use only.



Western blot of HEK293 lysate overexpressing human NLRP2 with DYKDDDDK tag probed with NALP2 antibody [1ug/ml] in Lane A and probed with anti-DYKDDDDK tag [1/1000] in lane C. Mock-transfected HEK293 probed with NALP2 antibody [1ug/ml] in Lane B.

Description

Additional name(s) for this target protein: NACHT, LRR and PYD containing protein 2; NLR family, pyrin domain containing 2; NBS1

Application Notes

Optimal dilution of the NALP2 antibody should be determined by the researcher.

Immunogen

Amino acids TEKHPWAERPSSHD were used as the immunogen for this NALP2 antibody.

Storage

Aliquot and store the NALP2 antibody at -20°C.